



# GAT MONTHLY MEMBERSHIP PROGRESS REPORT

Results as of: 6/30/2024

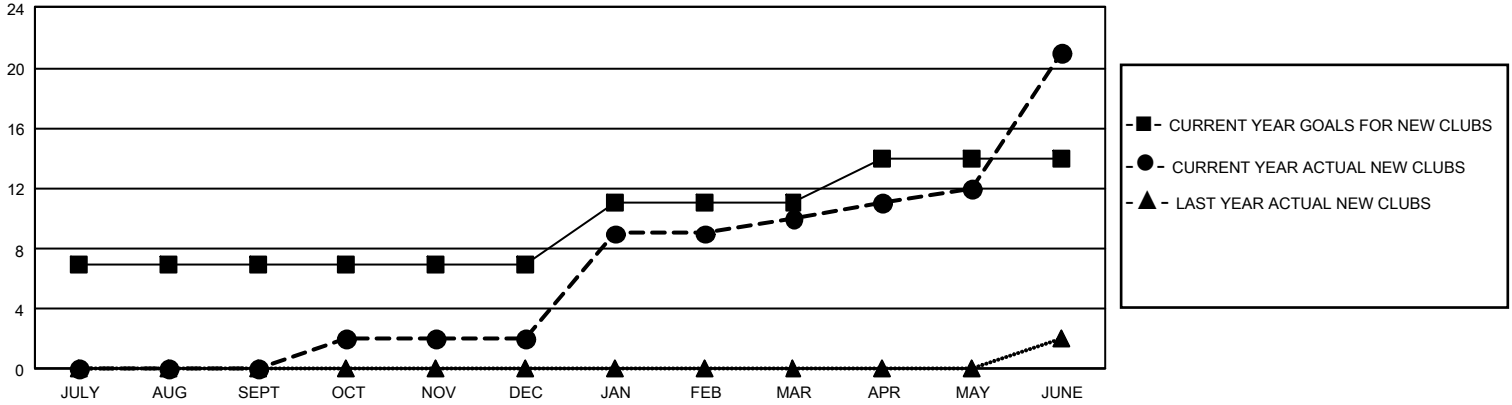
## GMT Constitutional Area 5 - C, Group B

REPORT DOES NOT INCLUDE CLUBS IN UNDISTRICTED AREAS.

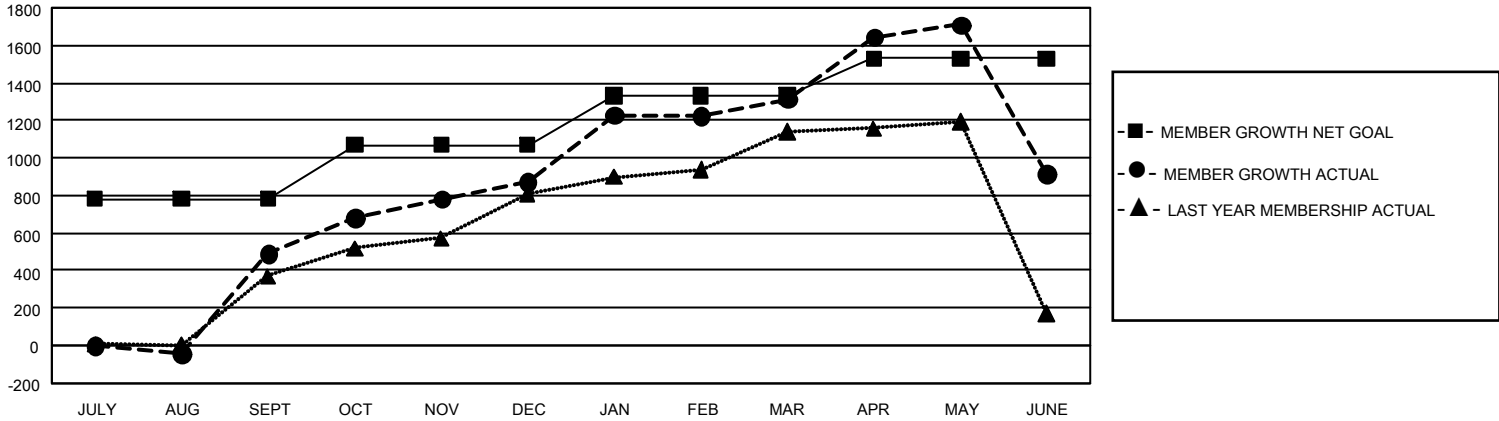
Clubs			
RESULTS FOR 2023-2024			
QUARTER	NEW CLUB GOAL	NEW CLUBS	DROPPED CLUBS
JULY/AUG/SEPT	21	0	0
OCT/NOV/DEC	0	2	0
JAN/FEB/MAR	12	8	0
APR/MAY/JUNE	9	11	0

Members			
RESULTS FOR 2023-2024			
QUARTER	MEMBER GROWTH NET GOAL	MEMBER GROWTH ACTUAL	DROPPED MEMBERS ACTUAL (including transfers)
JULY/AUG/SEPT	780	663	88
OCT/NOV/DEC	290	499	56
JAN/FEB/MAR	260	547	79
APR/MAY/JUNE	200	1,216	1,422

GOALS AND ACTUAL NEW CLUBS CUMULATIVE



GOALS AND ACTUAL MEMBERS CUMULATIVE



DROPPED CLUBS: 0	333 CLUBS OF 420 ADDED 1 OR MORE NEW MEMBERS	<u>GENDER DISTRIBUTION</u>	
<u>DROPPED MEMBERS</u>		MALE	5,631 (55.56%)
DECEASED	6	FEMALE	4,504 (44.44%)
CLUB CANCELLED	0	NON BINARY	0 (0.00%)
OTHER	1,639	PREFER NOT TO ANSWER	0 (0.00%)
TOTAL	1,645	TOTAL FAMILY UNIT MEMBERS	1,004
	<a href="#">CLICK HERE FOR CUMULATIVE MEMBERSHIP DATA</a>	FAMILY MEMBERS PAYING HALF DUES	518